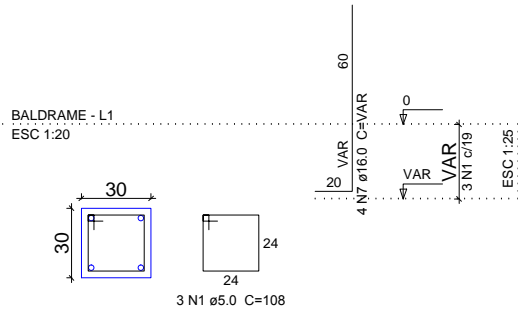
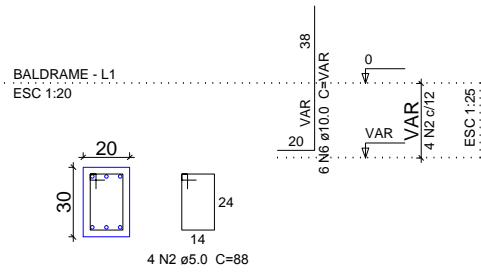


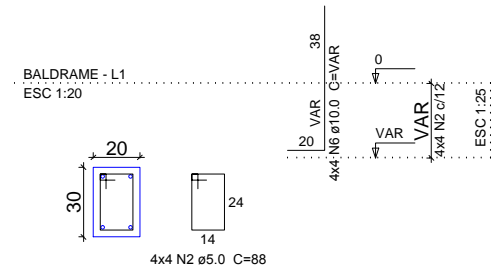
P1



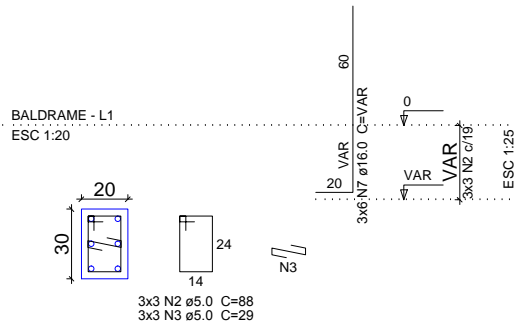
P4



P2=P3=P5=P8



P6=P7=P9

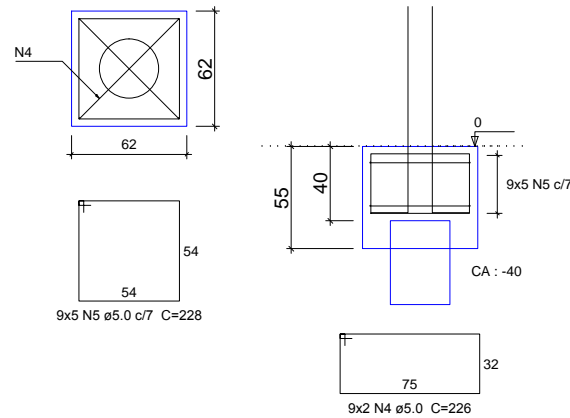


B1=B2=B3=B4=B5=B6=B7=B8=B9

1ø32

PLANTA
ESC 1:25

CORTE
ESC 1:25



Relação do aço

B9

AÇO	N	DIAM (mm)	QUANT (Barras)	UNIT (cm)	C.TOTAL (cm)
CA60	1	5.0	3	108	324
	2	5.0	29	88	2552
	3	5.0	9	29	261
	4	5.0	18	226	4068
CA50	5	5.0	45	228	10260
	6	10.0	22	VAR	VAR
	7	16.0	22	VAR	VAR

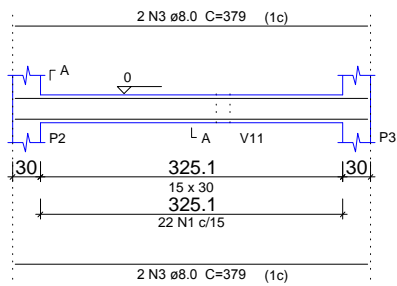
Resumo do aço

AÇO	DIAM (mm)	C.TOTAL (m)	PESO + 10% (kg)
CA50	10.0	21.2	14.3
	16.0	25.6	44.3
CA60	5.0	174.7	29.6
PESO TOTAL (kg)			
CA50		58.6	
CA60		29.6	

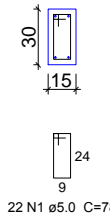
Volume de concreto (C-25) = 2.02 m³
Área de forma = 15.96 m²

PROJETO:	PROJETO ÁREA CONVIVÊNCIA SOCIAL		
DESTINO:	VGDF		
DESCRIÇÃO:	Planta detalhamento fundação - bloco e pilares de espera		
DATA:	ESCALA:	AUTOR DO PROJETO:	
12/03/2024	Indicada	ENG. ANNA CAROLINA MONTENEGRO CREA 325970-DF	

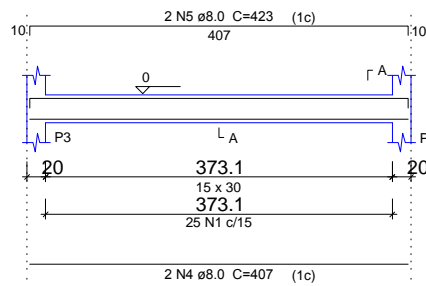
V3
ESC 1:50



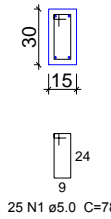
SEÇÃO A-A
ESC 1:25



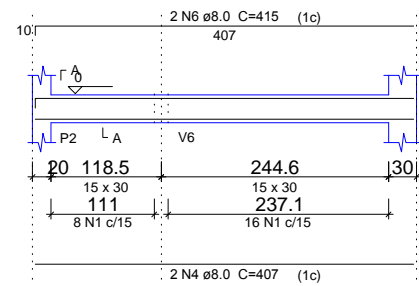
V4
ESC 1:50



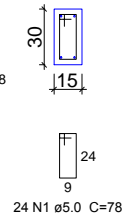
SEÇÃO A-A
ESC 1:25



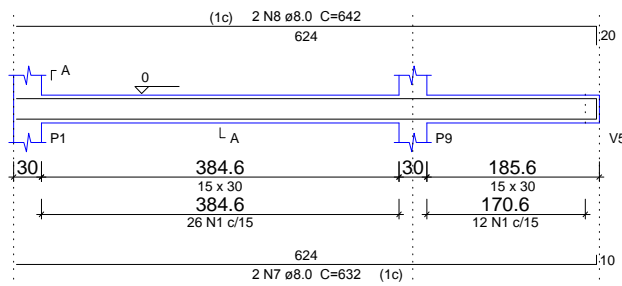
V5
ESC 1:50



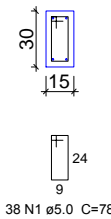
SEÇÃO A-A
ESC 1:25



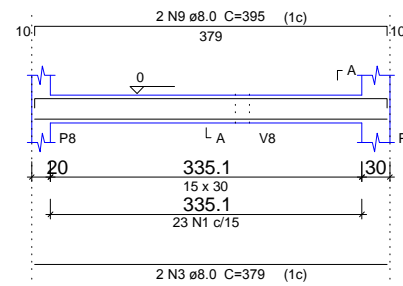
V6
ESC 1:50



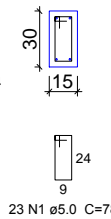
SEÇÃO A-A
ESC 1:25



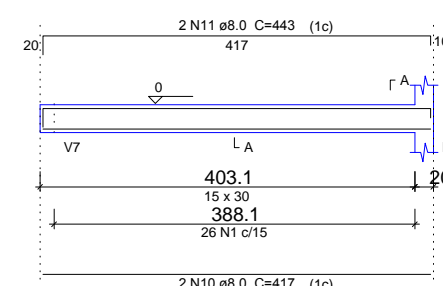
V7
ESC 1:50



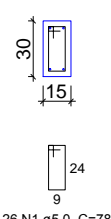
SEÇÃO A-A
ESC 1:25



V8
ESC 1:50



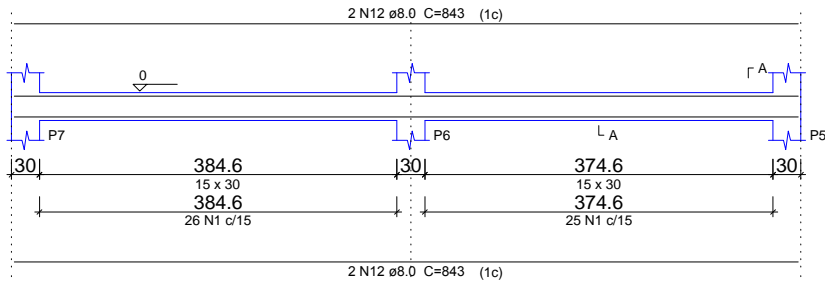
SEÇÃO A-A
ESC 1:25



PROJETO:	PROJETO ÁREA CONVIVÊNCIA SOCIAL		
DESTINO:	VGDF		
DESCRIÇÃO:	Planta detalhamento vigas baldrame 1/2		
DATA:	ESCALA:	AUTOR DO PROJETO:	
12/03/2024	indicada	ENGENHEIRA ANNA CAROLINA MONTENEGRO CREA 325970-DF	

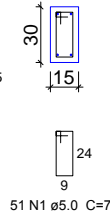
V9

ESC 1:50



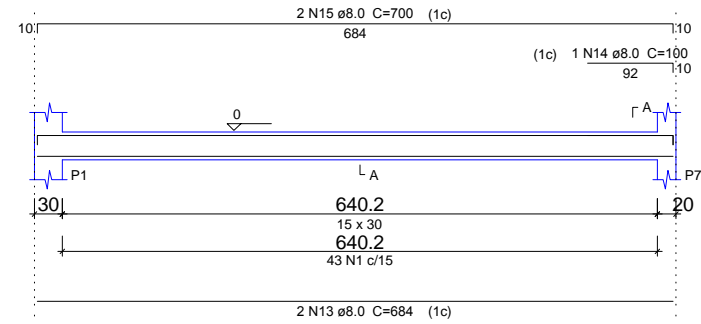
SEÇÃO A-A

ESC 1:25



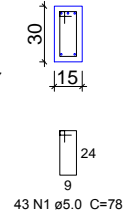
V10

ESC 1:50



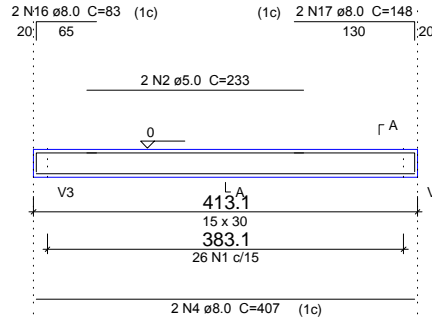
SEÇÃO A-A

ESC 1:25



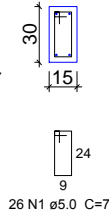
V11

ESC 1:50



SEÇÃO A-A

ESC 1:25



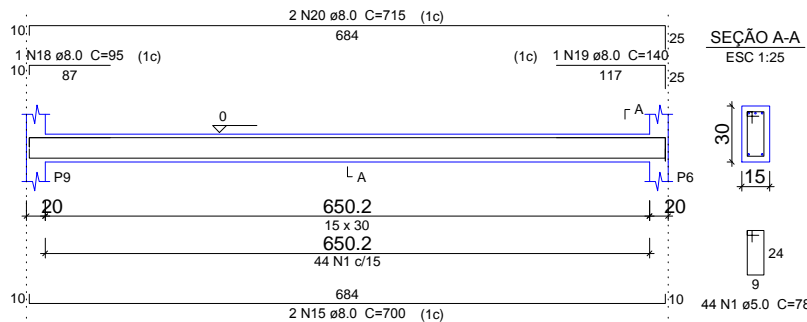
Relação do aço

V3	V4	V5
V6	V7	V8
V9	V10	V11
V12		

AÇO	N	DIAM (mm)	QUANT (Barras)	UNIT (cm)	C.TOTAL (cm)
CA60	1	5.0	322	78	25116
	2	5.0	2	233	466
CA50	3	8.0	6	379	2274
	4	8.0	6	407	2442
	5	8.0	2	423	846
	6	8.0	2	415	830
	7	8.0	2	632	1264
	8	8.0	2	642	1284
	9	8.0	2	395	790
	10	8.0	2	417	834
	11	8.0	2	443	886
	12	8.0	4	843	3372
	13	8.0	2	684	1368
	14	8.0	1	100	100
	15	8.0	4	700	2800
	16	8.0	2	83	166
	17	8.0	2	148	296
	18	8.0	1	95	95
	19	8.0	1	140	140
	20	8.0	2	715	1430

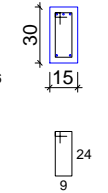
V12

ESC 1:50



SEÇÃO A-A

ESC 1:25



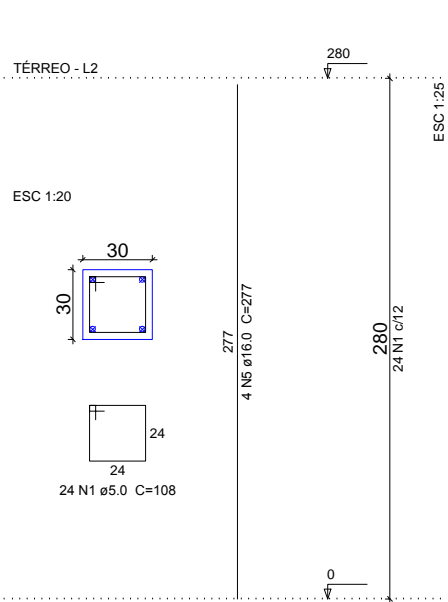
Resumo do aço

AÇO	DIAM (mm)	C.TOTAL (m)	PESO + 10 % (kg)
CA50	8.0	212.2	92.1
CA60	5.0	255.9	43.4
PESO TOTAL (kg)			
CA50		92.1	
CA60		43.4	

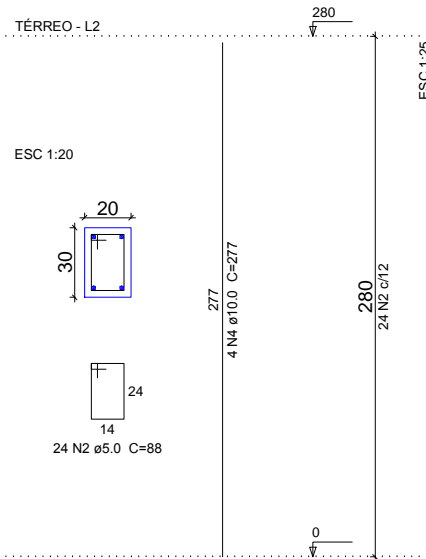
Volume de concreto (C-25) = 2.38 m³
Área de forma = 39.69 m²

PROJETO:	PROJETO ÁREA CONVIVÊNCIA SOCIAL
DESTINO:	VGDF
DESCRIÇÃO:	Planta detalhamento vigas baldrame 2/2
DATA:	12/03/2024
ESCALA:	indicada
AUTOR DO PROJETO:	ENGR. ANNA CAROLINA MONTENEGRO CREA 32970-DF

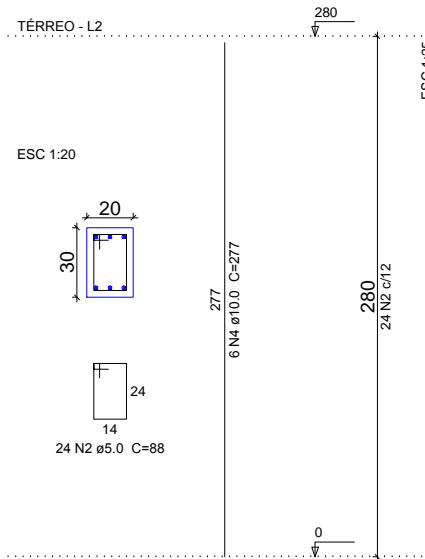
P1



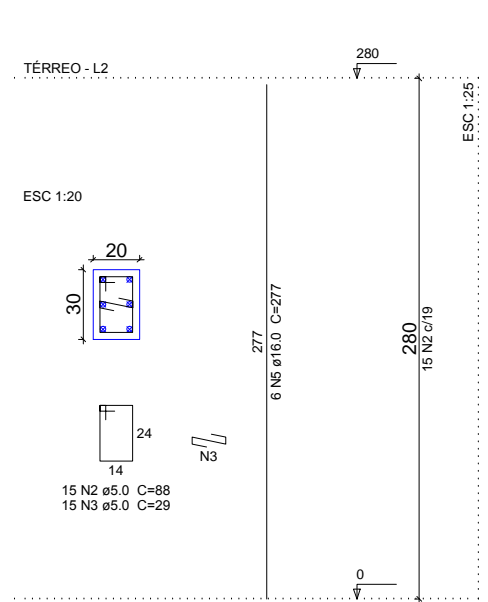
P2=P3=P5=P8



P4



P6=P7=P9



Relação do aço

P1 3xP6 4xP2 P4

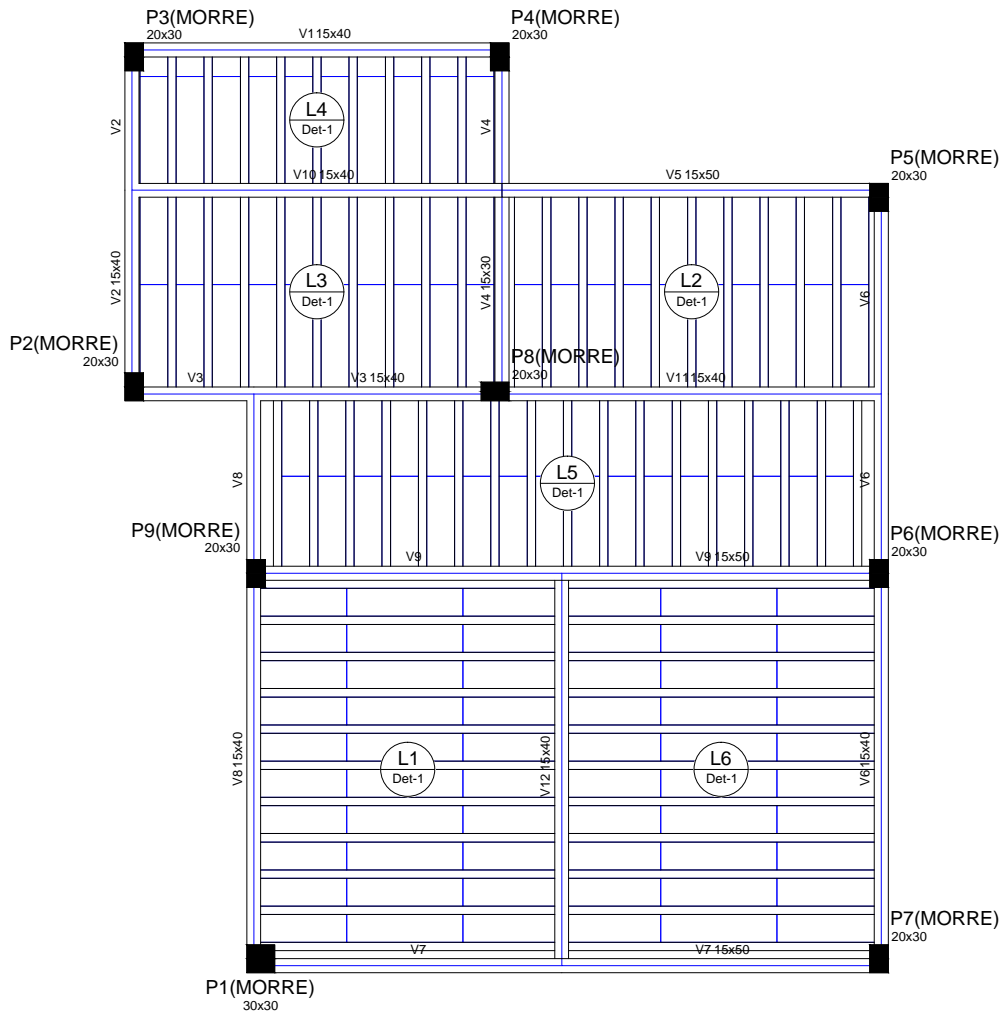
AÇO	N	DIAM (mm)	QUANT (Barras)	UNIT (cm)	C.TOTAL (cm)
CA60	1	5.0	24	108	2592
	2	5.0	165	88	14520
	3	5.0	45	29	1305
CA50	4	10.0	22	277	6094
	5	16.0	22	277	6094

Resumo do aço

AÇO	DIAM (mm)	C.TOTAL (m)	PESO + 10 % (kg)
CA50	10.0	61	41.3
	16.0	61	105.8
CA60	5.0	184.2	31.2
PESO TOTAL (kg)			
CA50		147.1	
CA60		31.2	

Volume de concreto (C-25) = 1.6 m³
Área de forma = 25.76 m²

PROJETO:	PROJETO ÁREA CONVIVÊNCIA SOCIAL		
DESTINO:	VGDF		
DESCRIÇÃO:	Planta detalhamento - pilares térreo		
DATA:	ESCALA:	AUTOR DO PROJETO:	
12/03/2024	Indicada	ENGR. ANNA CAROLINA MONTENEGRO CREA 325970-DF	



Vigas			
Nome	Seção (cm)	Elevação (cm)	Nível (cm)
V1	15x40	0	280
V2	15x40	0	280
V3	15x40	0	280
V4	15x30	0	280
V5	15x50	0	280
V6	15x40	0	280
V7	15x50	0	280
V8	15x40	0	280
V9	15x50	0	280
V10	15x40	0	280
V11	15x40	0	280
V12	15x40	0	280

Lajes								
Nome	Tipo	Dados			Sobrecarga (kgf/m²)			
		Altura (cm)	Elevação (cm)	Nível (cm)	Peso próprio (kgf/m²)	Adicional	Acidental	Localizada
L1	Treliçada 1D	13	0	280	172	50	150	-
L2	Treliçada 1D	13	0	280	172	50	150	-
L3	Treliçada 1D	13	0	280	172	50	150	-
L4	Treliçada 1D	13	0	280	172	50	150	-
L5	Treliçada 1D	13	0	280	172	50	150	-
L6	Treliçada 1D	13	0	280	172	50	150	-

Características dos materiais	
fck (kgf/cm²)	Ecs (kgf/cm²)
250	238000

Pilares			
Nome	Seção (cm)	Elevação (cm)	Nível (cm)
P1	30 x 30	0	280
P2	20 x 30	0	280
P3	20 x 30	0	280
P4	20 x 30	0	280
P5	20 x 30	0	280
P6	20 x 30	0	280
P7	20 x 30	0	280
P8	20 x 30	0	280
P9	20 x 30	0	280

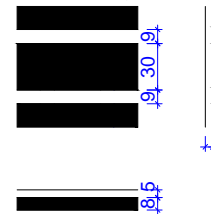
Legenda dos Pilares	
	Pilar que morre
	Pilar que passa
	Pilar que nasce
	Pilar com mudança de seção

Forma do pavimento térreo

escala 1:50

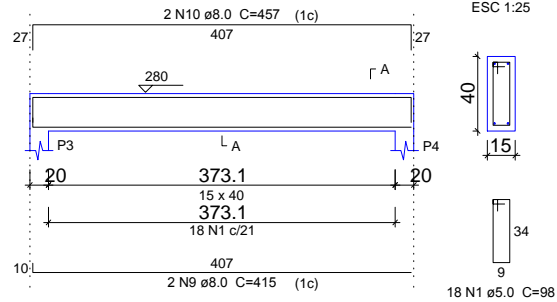
Blocos de enchimento						
Detalhe	Tipo	Nome	Dimensões (cm)			Quantidade
			hb	bx	by	
1	EPS Unidirecional	B8/30/125	8	30	125	152

Detalhe 1 (esc. 1:30)

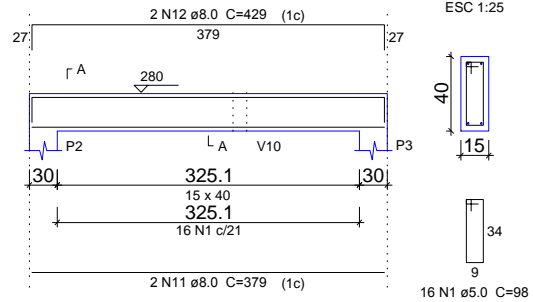


PROJETO:	PROJETO ÁREA CONVIVÊNCIA SOCIAL		
DESTINO:	VGDF		
DESCRIÇÃO:	Planta de formas - laje térreo		
DATA:	ESCALA:	AUTOR DO PROJETO:	ENG. ANNA CAROLINA MONTEIRO CREA 32970-DF
12/03/2024	Indicada	ENG.	

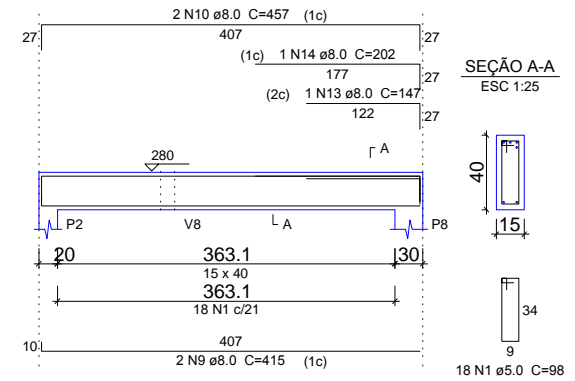
V1
ESC 1:50



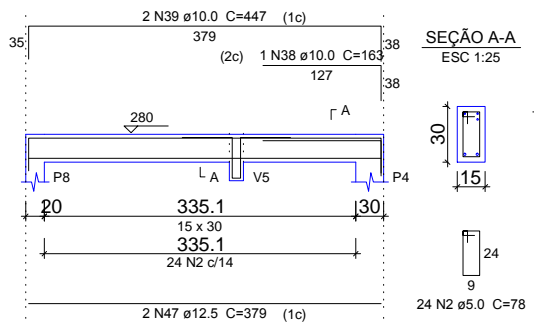
V2
ESC 1:50



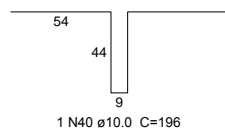
V3
ESC 1:50



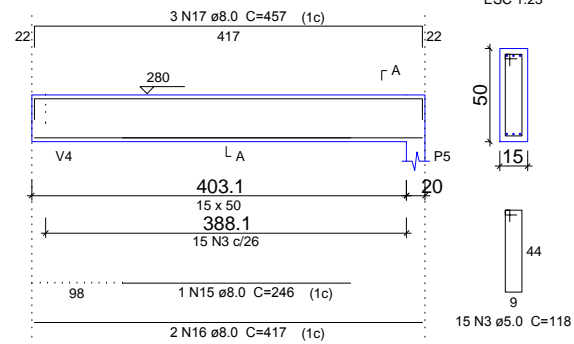
V4
ESC 1:50



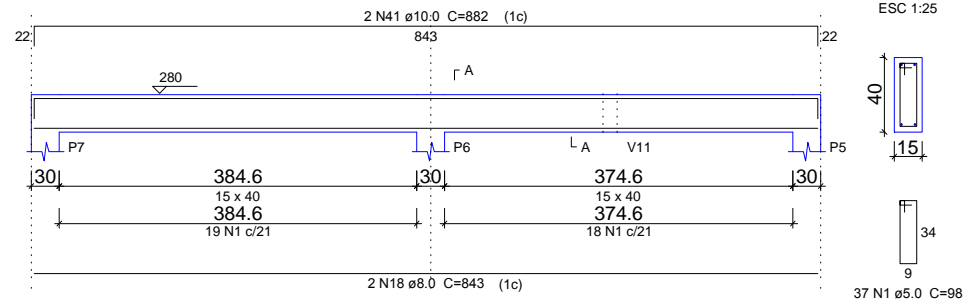
SUSPENSÃO V5
ESC 1:25



V5
ESC 1:50

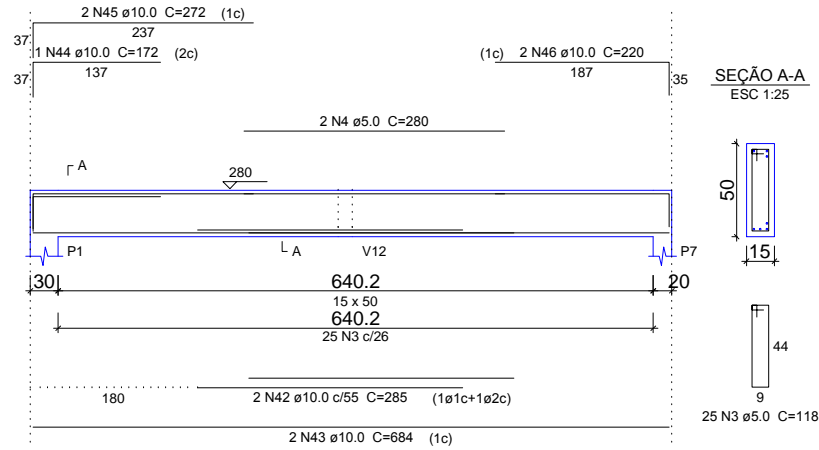


V6
ESC 1:50

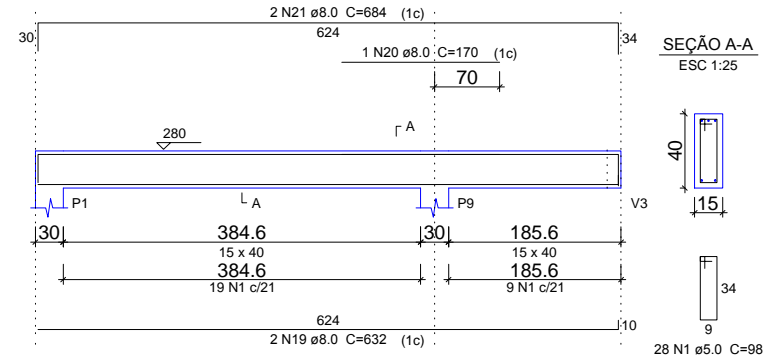


PROJETO:	PROJETO ÁREA CONVIVÊNCIA SOCIAL		
DESTINO:	VGDF		
DESCRIÇÃO:	Planta detalhamento vigas térreo 1/3		
DATA:	ESCALA:	AUTOR DO PROJETO:	
12/03/2024	Indicada	ENGR. ANNA CAROLINA MONTENEGRO CREA 325970-DF	

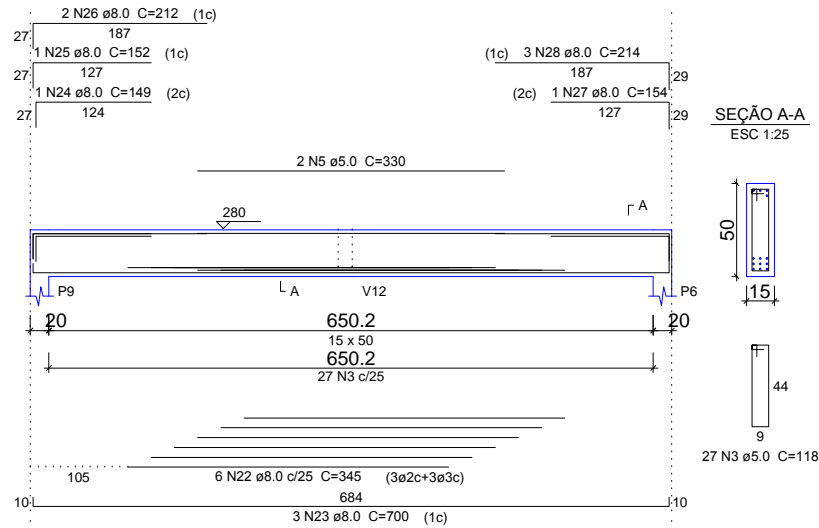
V7
ESC 1:50



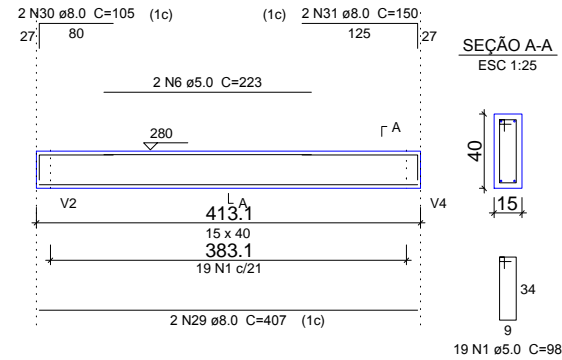
V8
ESC 1:50



V9
ESC 1:50



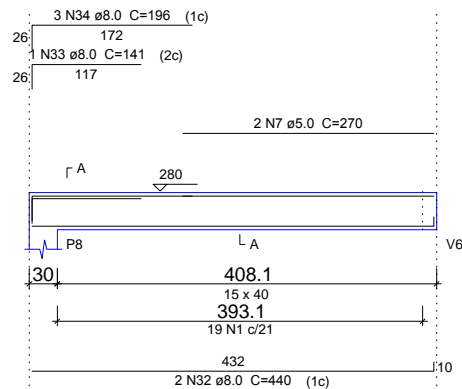
V10
ESC 1:50



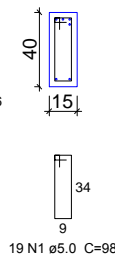
PROJETO:	PROJETO ÁREA CONVIVÊNCIA SOCIAL		
DESTINO:	VGDF		
DESCRIÇÃO:	Planta detalhamento vigas térreo 2/3		
DATA:	ESCALA:	AUTOR DO PROJETO:	
12/03/2024	Indicada	ENGR. ANNA CAROLINA MONTENEGRO CREA 325970-DF	

V11

ESC 1:50

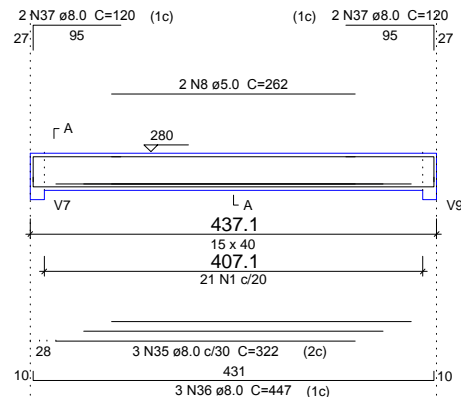


SEÇÃO A-A
ESC 1:25

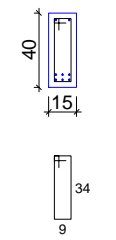


V12

ESC 1:50



SEÇÃO A-A
ESC 1:25



Resumo do aço

AÇO	DIAM (mm)	C.TOTAL (m)	PESO + 10 % (kg)
CA50	8.0	238.1	103.3
	10.0	61.2	41.4
	12.5	7.6	8
CA60	5.0	297.6	50.5
PESO TOTAL (kg)			
CA50	152.8		
CA60	50.5		

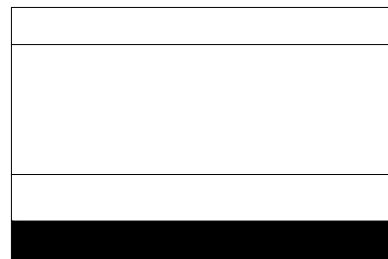
Volume de concreto (C-25) = 3.91 m³
Área de forma = 61.43 m²

Relação do aço

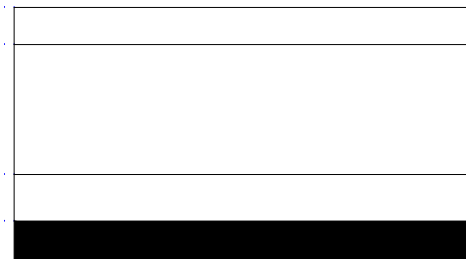
V1	V2	V3
V4	V5	V6
V7	V8	V9
V10	V11	V12

AÇO	N	DIAM (mm)	QUANT (Barras)	UNIT (cm)	C.TOTAL (cm)
CA60	1	5.0	176	98	17248
	2	5.0	24	78	1872
	3	5.0	67	118	7906
	4	5.0	2	280	560
	5	5.0	2	330	660
	6	5.0	2	223	446
	7	5.0	2	270	540
	8	5.0	2	262	524
CA50	9	8.0	4	415	1660
	10	8.0	4	457	1828
	11	8.0	2	379	758
	12	8.0	2	429	858
	13	8.0	1	147	147
	14	8.0	1	202	202
	15	8.0	1	246	246
	16	8.0	2	417	834
	17	8.0	3	457	1371
	18	8.0	2	843	1686
	19	8.0	2	632	1264
	20	8.0	1	170	170
	21	8.0	2	684	1368
	22	8.0	6	345	2070
	23	8.0	3	700	2100
	24	8.0	1	149	149
	25	8.0	1	152	152
	26	8.0	2	212	424
	27	8.0	1	154	154
	28	8.0	3	214	642
	29	8.0	2	407	814
	30	8.0	2	105	210
	31	8.0	2	150	300
	32	8.0	2	440	880
	33	8.0	1	141	141
	34	8.0	3	196	588
	35	8.0	3	322	966
	36	8.0	3	447	1341
	37	8.0	4	120	480
	38	10.0	1	163	163
	39	10.0	2	447	894
	40	10.0	1	196	196
	41	10.0	2	882	1764
	42	10.0	2	285	570
	43	10.0	2	684	1368
	44	10.0	1	172	172
	45	10.0	2	272	544
	46	10.0	2	220	440
	47	12.5	2	379	758

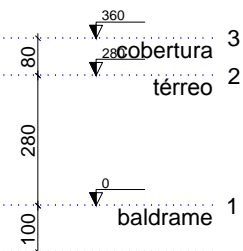
PROJETO:	PROJETO ÁREA CONVIVÊNCIA SOCIAL		
DESTINO:	VGDF		
DESCRIÇÃO:	Planta detalhamento vigas térreo 3/3		
DATA:	ESCALA:	AUTOR DO PROJETO:	
12/03/2024	Indicada	ENG. ANNA CAROLINA MONTEIRO CREA 325970-DF	



Corte X-X
escala 1:100

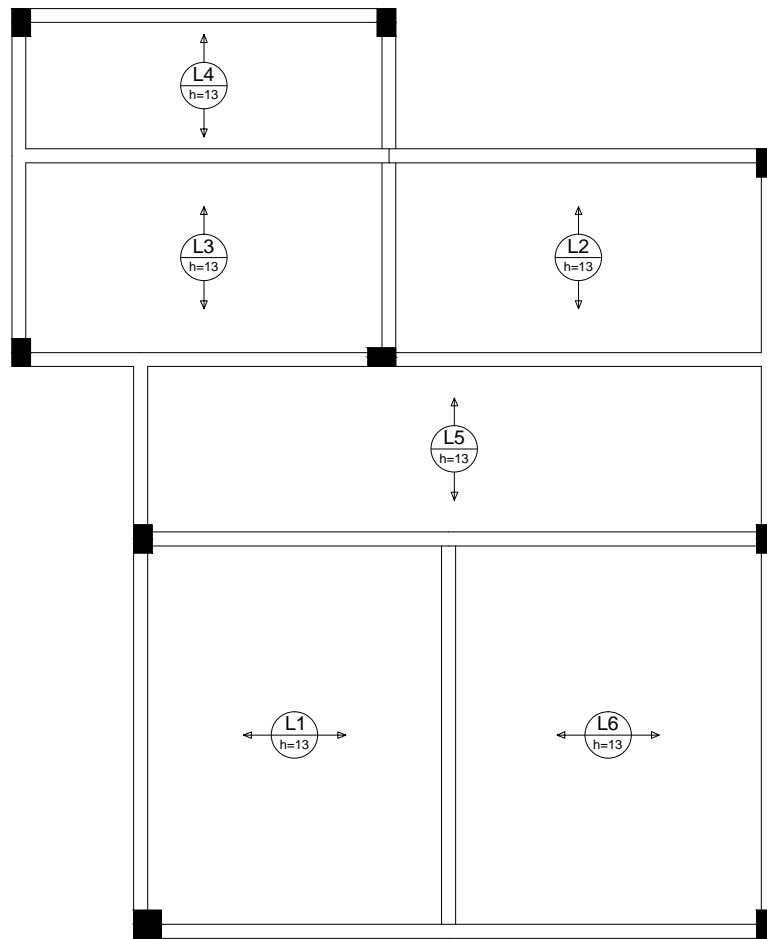


Corte Y-Y
escala 1:100

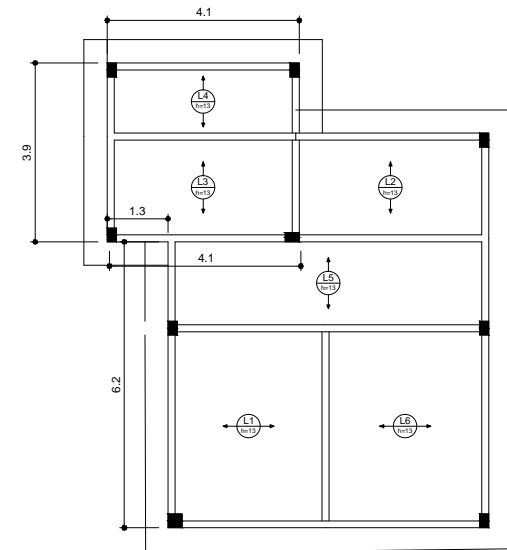


PROJETO:	PROJETO ÁREA CONVIVÊNCIA SOCIAL	
DESTINO:	VGDF	
DESCRIÇÃO:	Planta de corte	
DATA:	ESCALA:	AUTOR DO PROJETO:
12/03/2024	indicada	ENG. ANNA CAROLINA MONTENEGRO CREA 325970-DF

Armação positiva das lajes do pavimento térreo (Eixo X)



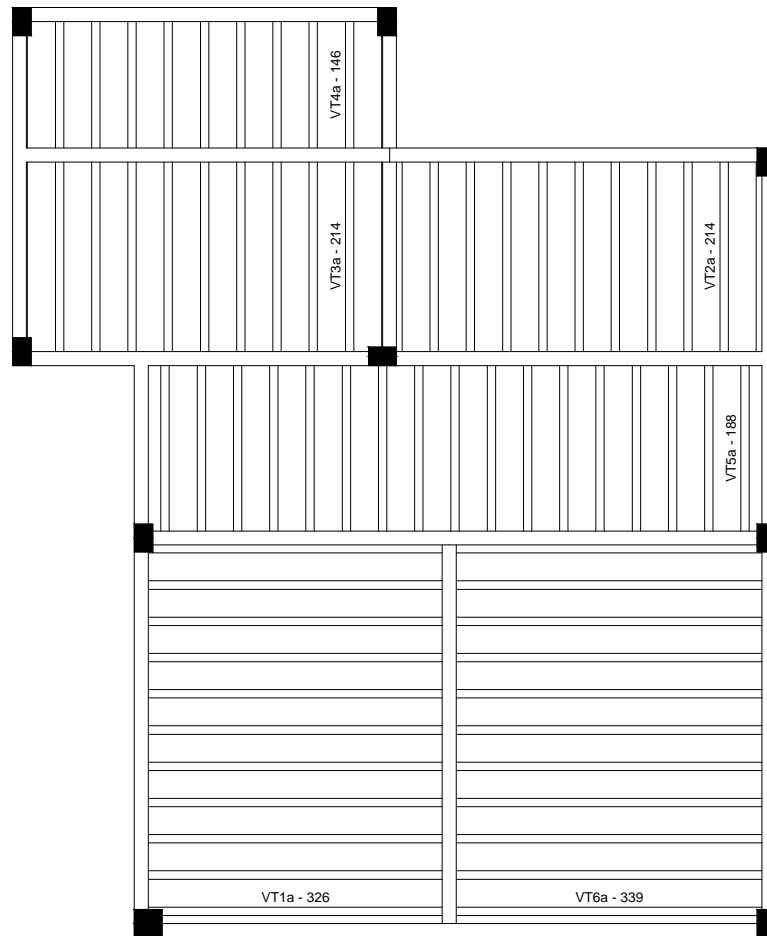
escala 1:50



escala 1:50

Armação positiva das lajes do pavimento térreo (Eixo Y)

PROJETO:	PROJETO ÁREA CONVIVÊNCIA SOCIAL		
DESTINO:	VGDF		
DESCRIÇÃO:	Planta detalhamento laje térreo 1/2		
DATA:	ESCALA:	AUTOR DO PROJETO:	
12/03/2024	indicada	ENGR. ANNA CAROLINA MONTEIRO CREA 325970-DF	



Planta de vigotas pré-moldadas
escala 1:50

Relação do aço

AÇO	N	DIAM (mm)	QUANT (Barras)	UNIT (cm)	C.TOTAL (cm)
-----	---	-----------	----------------	-----------	--------------

Resumo do aço

AÇO	DIAM (mm)	C.TOTAL (m)	PESO + 10 % (kg)
PESO TOTAL (kg)			

PROJETO:	PROJETO ÁREA CONVIVÊNCIA SOCIAL		
DESTINO:	VGDF		
DESCRIÇÃO:	Planta detalhamento laje térreo 2/2		
DATA:	ESCALA:	AUTOR DO PROJETO:	
12/03/2024	indicada	ENGR. ANNA CAROLINA MONTENEGRO CREA 325970-DF	